

# Vampire 500 V1



Designed in 2013 for proof-of-concept purpose. Never released.

---

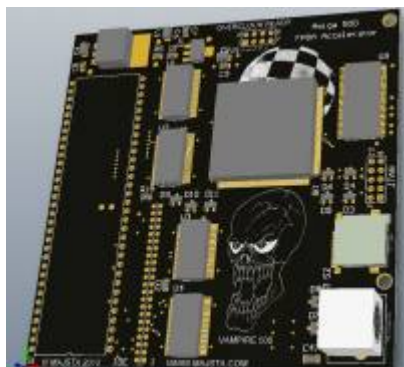
## Signature

- **Target:** Amiga 500 (connects to the CPU socket)
- **Designer:** [Majsta](#)
- **Producer:** [Majsta](#)
- **Release Date:** Never released

## Specifications

- **FPGA:** Altera Cyclone II
  - **Memory:** 64 MB FastRAM
  - **Internal Ports:**
    - 44-pin IDE Interface
    - JTAG Socket
  - **External Ports:**
    - PS/2 (for connecting a mouse)
- 

## Gallery





---

You are here: [start](#) » [vampire](#) » [v500-v1](#)

From:  
<https://www.apollo-accelerators.com/wiki/> - **Apollo Accelerators**

Permanent link:  
<https://www.apollo-accelerators.com/wiki/doku.php/vampire:v500-v1?rev=1571948565>

Last update: **2020/08/02 12:37**

