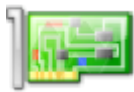


Vampire 500 V1



Designed in 2013 for proof-of-concept purpose. Never released.

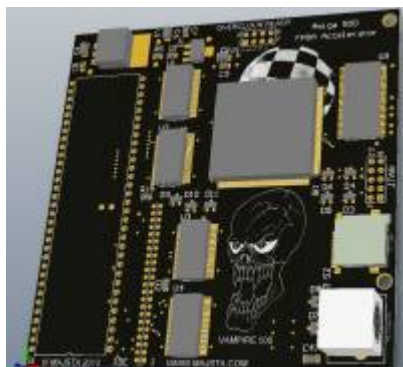
Signature

- **Target:** Amiga 500 (connects to the CPU socket)
- **Designer:** [Majsta](#)
- **Manufacturer:** [Majsta](#)
- **Release Date:** Never released

Specifications

- **FPGA:** Altera Cyclone II
 - **Memory:** 64 MB FastRAM
 - **Internal Ports:**
 - 44-pin IDE Interface
 - JTAG Socket
 - **External Ports:**
 - PS/2 (for connecting a mouse)
-

Gallery





You are here: [start](#) » [vampire](#) » [v500-v1](#)

From:
<https://wiki.apollo-accelerators.com/> - **Apollo Accelerators**

Permanent link:
<https://wiki.apollo-accelerators.com/doku.php/vampire:v500-v1>

Last update: **2020/08/02 12:37**

